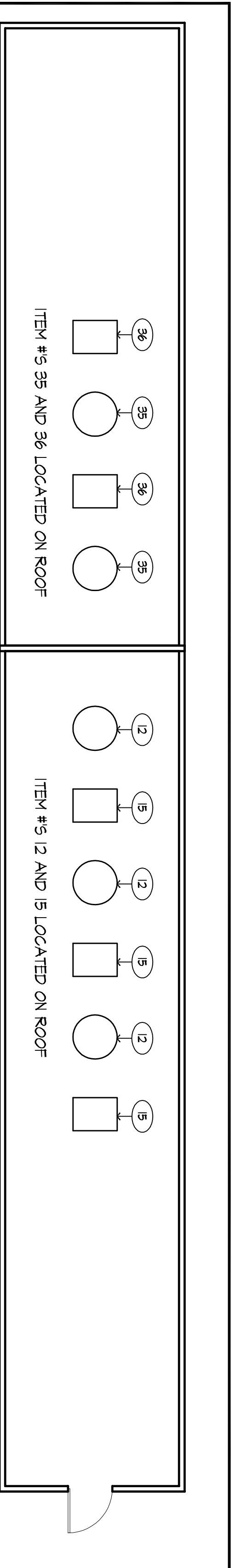
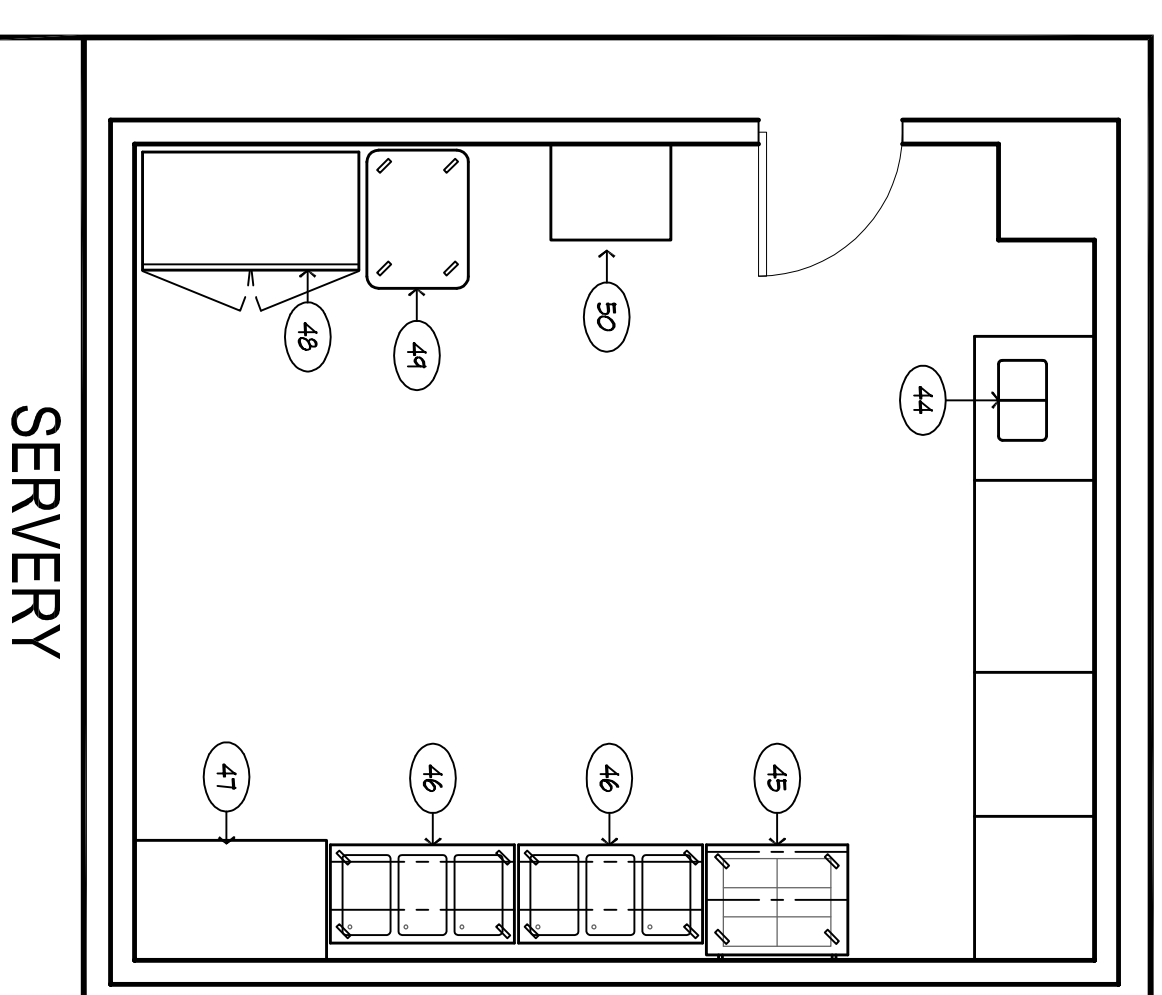


TEMP KITCHEN EQUIPMENT LAYOUT



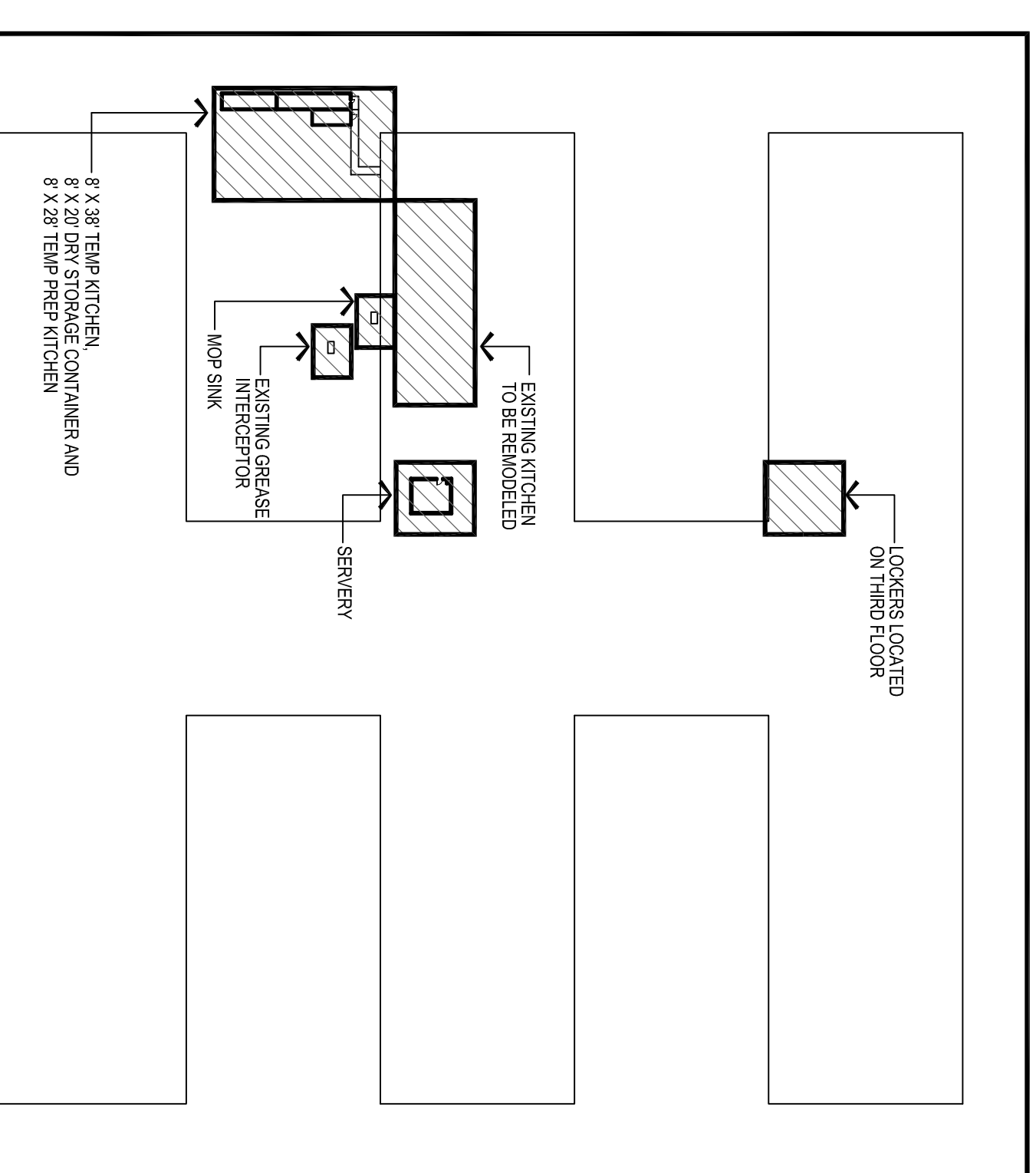
TEMP KITCHEN ROOF PLAN



SERVERY

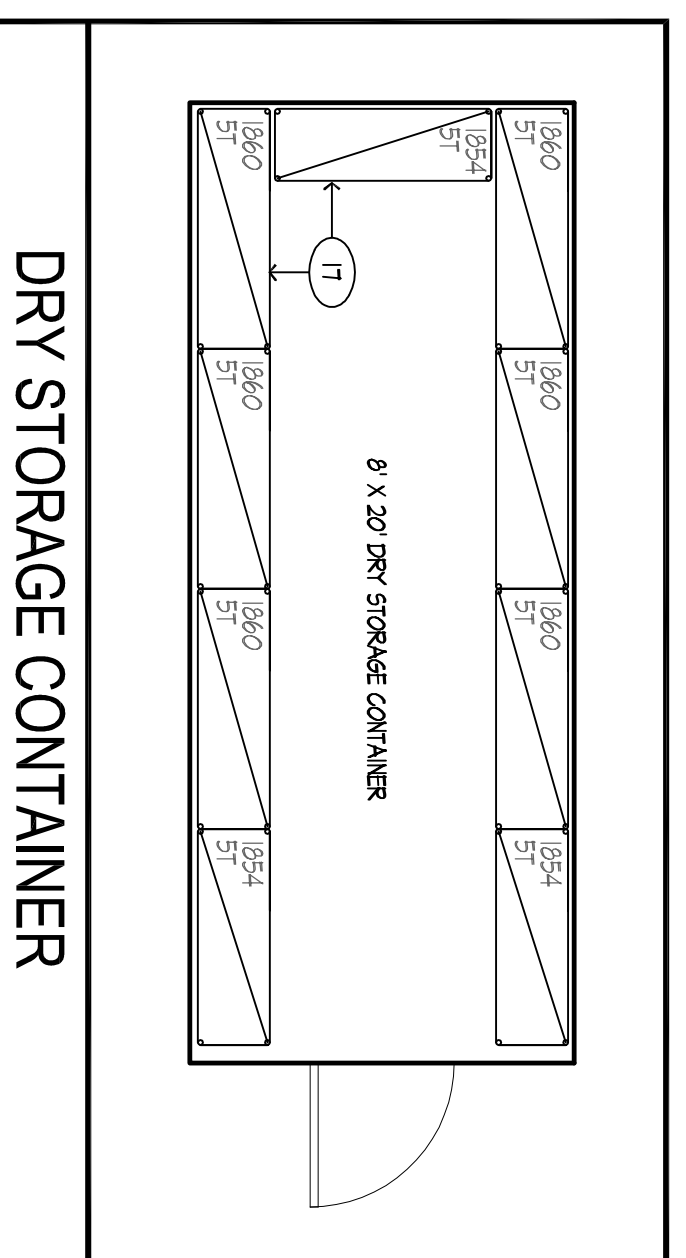
GENERAL NOTES

- MOBILE KITCHENS AND DRY STORAGE CONTAINERS TO BE PROVIDED BY OWNER VIA LEASING CONTRACT
- REFER TO EQUIPMENT SCHEDULE AND EQUIPMENT LAYOUTS FOR DRY AND COLD STORAGE CONTAINERS
- REFER TO ELECTRICAL DRAWINGS FOR POWER REDS
- REFER TO PLUMBING DRAWINGS FOR WATER AND SEWER CONNECTIONS
- 100' RAMP 200/220V/1PH OR 2PH POWER
- 5/4" FRESH WATER LINE FOR DISHWASHER
- CLIENT RESPONSIBLE FOR ALL UTILTY CONNECTIONS TO AND FROM TRAILER AT ALL POINTS OF CONNECTION
- ALL UTILITIES AND EQUIPMENT OUTSIDE OF THE TRAILERS TRAILER SEALS MUST BE PROTECTED OR RECONSTRUCTED



NOTE: ADA RAMP LEADING FROM TEMPORARY KITCHEN TO FACILITY PROVIDED BY G.C.

SITE PLAN



DRY STORAGE CONTAINER

EQUIPMENT	ITEM #	DESCRIPTION	MAKE	MODEL	FINI	HGT	WT	DIM	M	SIZE	SERIAL NUMBER	ELECTRICAL		
												VOLTS	PHASE	AMPS
MECHANICAL														
BUYOUT AND CUSTOM EQUIPMENT														
1	FRYER	ARIZONA	AR-6	2007-2008	---	---	---	34"	12"	5'	---	---	---	---
2	FRYER	ARIZONA	AR-6	2007-2008	---	---	---	34"	12"	5'	---	---	---	---
3	6.0 B. BAKER IN OVEN BAKE	ARIZONA	AR-6	2007-2008	---	---	---	34"	27"	---	---	---	---	---
4	DISCOZE IN OVEN BAKE	ARIZONA	AR-6	2007-2008	---	---	---	12"	---	---	---	---	---	---
5	CONVECTION OVEN	THORNTON	6225	2007-2008	---	---	---	12"	33"	---	---	---	---	---
6	1. REFRIG. TABLE TOP FREEZER	EMERSON	EF205	2007-2008	---	---	---	---	---	---	---	---	---	---
7	REFRIG. TABLE	EMERSON	EF205	2007-2008	---	---	---	---	---	---	---	---	---	---
8	1. FREEZER	EMERSON	EF205	2007-2008	---	---	---	---	---	---	---	---	---	---
9	3. COFFEE MAKER IN TRAY	SEIKO	PC-200	2007-2008	---	---	---	12"	---	---	---	---	---	---
10	1. ESSENCE	SEIKO	PC-200	2007-2008	---	---	---	12"	---	---	---	---	---	---
11	1. ESSENCE	SEIKO	PC-200	2007-2008	---	---	---	12"	---	---	---	---	---	---
12	1. ESSENCE	SEIKO	PC-200	2007-2008	---	---	---	12"	---	---	---	---	---	---
13	1. ESSENCE	SEIKO	PC-200	2007-2008	---	---	---	12"	---	---	---	---	---	---
14	1. ESSENCE	SEIKO	PC-200	2007-2008	---	---	---	12"	---	---	---	---	---	---
15	1. ESSENCE	SEIKO	PC-200	2007-2008	---	---	---	12"	---	---	---	---	---	---
16	1. ESSENCE	SEIKO	PC-200	2007-2008	---	---	---	12"	---	---	---	---	---	---
17	1. ESSENCE	SEIKO	PC-200	2007-2008	---	---	---	12"	---	---	---	---	---	---
18	1. ESSENCE	SEIKO	PC-200	2007-2008	---	---	---	12"	---	---	---	---	---	---
19	1. ESSENCE	SEIKO	PC-200	2007-2008	---	---	---	12"	---	---	---	---	---	---
20	1. ESSENCE	SEIKO	PC-200	2007-2008	---	---	---	12"	---	---	---	---	---	---
21	1. ESSENCE	SEIKO	PC-200	2007-2008	---	---	---	12"	---	---	---	---	---	---
22	1. ESSENCE	SEIKO	PC-200	2007-2008	---	---	---	12"	---	---	---	---	---	---
23	1. ESSENCE	SEIKO	PC-200	2007-2008	---	---	---	12"	---	---	---	---	---	---
24	1. ESSENCE	SEIKO	PC-200	2007-2008	---	---	---	12"	---	---	---	---	---	---
25	1. ESSENCE	SEIKO	PC-200	2007-2008	---	---	---	12"	---	---	---	---	---	---
26	1. ESSENCE	SEIKO	PC-200	2007-2008	---	---	---	12"	---	---	---	---	---	---
27	1. ESSENCE	SEIKO	PC-200	2007-2008	---	---	---	12"	---	---	---	---	---	---
28	1. ESSENCE	SEIKO	PC-200	2007-2008	---	---	---	12"	---	---	---	---	---	---
29	1. ESSENCE	SEIKO	PC-200	2007-2008	---	---	---	12"	---	---	---	---	---	---
30	1. ESSENCE	SEIKO	PC-200	2007-2008	---	---	---	12"	---	---	---	---	---	---
31	1. ESSENCE	SEIKO	PC-200	2007-2008	---	---	---	12"	---	---	---	---	---	---
32	1. ESSENCE	SEIKO	PC-200	2007-2008	---	---	---	12"	---	---	---	---	---	---
33	1. ESSENCE	SEIKO	PC-200	2007-2008	---	---	---	12"	---	---	---	---	---	---
34	1. ESSENCE	SEIKO	PC-200	2007-2008	---	---	---	12"	---	---	---	---	---	---
35	1. ESSENCE	SEIKO	PC-200	2007-2008	---	---	---	12"	---	---	---	---	---	---
36	1. ESSENCE	SEIKO	PC-200	2007-2008	---	---	---	12"	---	---	---	---	---	---
37	1. ESSENCE	SEIKO	PC-200	2007-2008	---	---	---	12"	---	---	---	---	---	---
38	1. ESSENCE	SEIKO	PC-200	2007-2008	---	---	---	12"	---	---	---	---	---	---
39	1. ESSENCE	SEIKO	PC-200	2007-2008	---	---	---	12"	---	---	---	---	---	---
40	1. ESSENCE	SEIKO	PC-200	2007-2008	---	---	---	12"	---	---	---	---	---	---
41	1. ESSENCE	SEIKO	PC-200	2007-2008	---	---	---	12"	---	---	---	---	---	---
42	1. ESSENCE	SEIKO	PC-200	2007-2008	---	---	---	12"	---	---	---	---	---	---
43	1. ESSENCE	SEIKO	PC-200	2007-2008	---	---	---	12"	---	---	---	---	---	---
44	1. ESSENCE	SEIKO	PC-200	2007-2008	---	---	---	12"	---	---	---	---	---	---
45	1. ESSENCE	SEIKO	PC-200	2007-2008	---	---	---	12"	---	---	---	---	---	---
46	1. ESSENCE	SEIKO	PC-200	2007-2008	---	---	---	12"	---	---	---	---	---	---
47	1. ESSENCE	SEIKO	PC-200	2007-2008	---	---	---	12"	---	---	---	---	---	---
48	1. ESSENCE	SEIKO	PC-200	2007-2008	---	---	---	12"	---	---	---	---	---	---
49	1. ESSENCE	SEIKO	PC-200	2007-2008	---	---	---	12"	---	---	---	---	---	---
50	1. ESSENCE	SEIKO	PC-200	2007-2008	---	---	---	12"	---	---	---	---	---	---
51	1. ESSENCE	SEIKO	PC-200	2007-2008	---	---	---	12"	---	---	---	---	---	---



SITE MAP

AREA	FLOOR	WALLS	CEILING	NOTES
PREP AREA	DIAMOND PLATE	DIAMOND PLATE	FRP	FRP
COOK LINE	DIAMOND PLATE	DIAMOND PLATE	FRP	FRP
WARE WASH	DIAMOND PLATE	DIAMOND PLATE	FRP	FRP
DRY STORAGE	DIAMOND PLATE	DRYWALL W/ WHITE SEMI-GLOSS ENAMEL PAINT	DRYWALL W/ WHITE SEMI-GLOSS ENAMEL PAINT	DRYWALL W/ WHITE SEMI-GLOSS ENAMEL PAINT
SERVERY	CARPET	TOPSET COVE BASE	DRYWALL W/ WHITE SEMI-GLOSS ENAMEL PAINT	DRYWALL W/ WHITE SEMI-GLOSS ENAMEL PAINT

NOTES: COVE BASE TO EXTEND UP WALL A MINIMUM OF 4"

FINISH SCHEDULE